

SECTION 3 HIDEAWAY ISLES

A SUBDIVISION LOCATED IN SECTION 1 T 38S R 40E

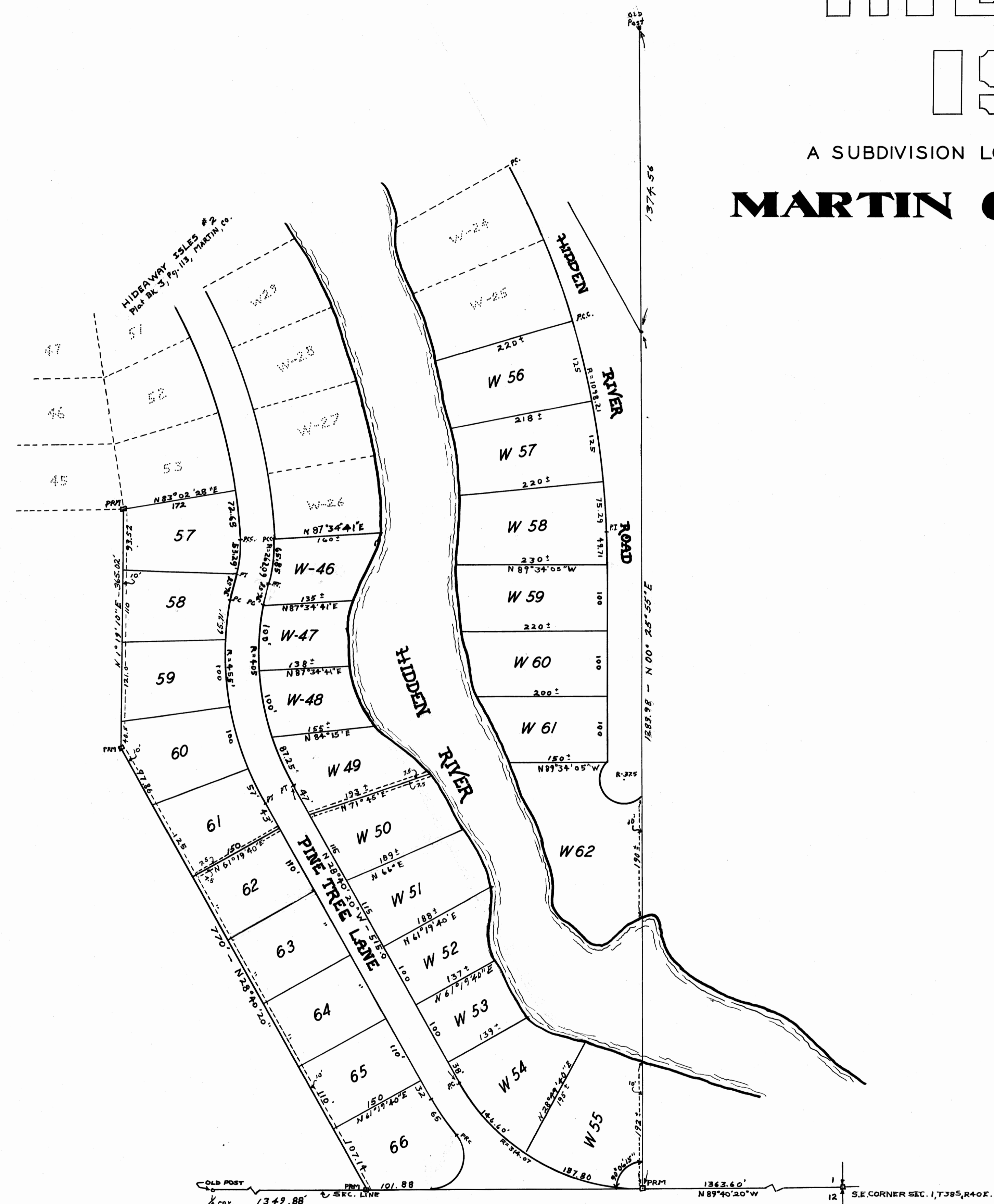
MARTIN COUNTY, FLORIDA

Scale 1"=100'

I Hereby Certify that I have examined the attached plat and find that it complies in form with all the requirements of Chapter 177 Florida Statutes, and that this plat was filed for record at 2:01 AM this 4th day of Nov AD, 1959, in plat book 3 page 124, in the office of the Clerk of the Circuit Court at Stuart, Florida.

CLERK OF THE CIRCUIT COURT
Dorothy Pierce
By: Judith Arnold & Co.

FILE NO. 72414



NOTE: - - - - - DENOTES DRAINAGE UTILITIES EASEMENT WIDTH IS AS NOTED.

DEDICATION STATE OF FLORIDA COUNTY OF MARTIN

Know All Men By These Presents that 'HIDEAWAY ISLES INC.' a corporation organized and existing under the laws of the state of Florida, owners in fee simple of the land subdivided as shown hereon, has caused said land to be surveyed and platted as shown hereon, and does hereby dedicate to the perpetual use of the public the roads shown hereon, reserving however, unto its self, its legal representatives, its heirs, and assigns, the reversion or reversions thereof, whenever abandoned, by deed stipulation, or discontinued by law.

In Witness Whereof it has caused these presents to be signed by its president and its corporate seal to be affixed by its secretary this 25th day of Aug. A.D., 1959.

HIDEAWAY ISLES, INC.
Walter E. Travers
PRESIDENT
Kathleen W. Travers
SECRETARY

ACKNOWLEDGEMENT STATE OF FLORIDA COUNTY OF MARTIN

Before Me This Day personally appeared Walter E. Travers and Kathleen W. Travers, president and secretary respectively, of 'Hideaway Isles, Inc.', a Florida corporation, and acknowledged before me that they executed the dedication shown hereon for the uses and purposes therein stated, in behalf of said corporation.

Witness my hand and official seal this 25th day of Aug., A.D., 1959.

Carolyn W. Son
NOTARY PUBLIC

My commission expires April 14, 1963

CERTIFICATE STATE OF FLORIDA COUNTY OF MARTIN

I Hereby Certify that the attached plat is a true and correct representation of a survey made under my direction, and that said survey was accurate to the best of my knowledge and belief, and that permanent reference monuments were placed as prescribed by law.

James E. Brock
REGISTERED LAND SURVEYOR
FLORIDA CERTIFICATE NO. 688

Subscribed and sworn to before me this 25th day of Aug. A.D., 1959.

Carolyn W. Son
NOTARY PUBLIC

My commission expires; April 14, 1963

APPROVED
Board of County Commissioners;

Leopoldo Wilson
CHAIRMAN

SHEET 1 OF 2

STAFFORD & BROCK
ENGINEERS
SURVEYORS
STUART - FLORIDA

DATE: AUG. 20, 1959 DWG BY: RBT.